

Log

1. Log Module

LOG systems can be used on computers as a feature of software programmes and operation systems. The system serves for keeping uninterrupted record of the operations processed by users, the times of these operations during the working hours. These records can be referred to when any kind of errors that involve security issues arise. Be it intentional or unintentional, when such error occurs, the user who caused the error and the relevant time can be traced in these records. The LOG application is particularly used in the IT systems of banks. The LOG system features a function which domestic and international auditors seek in computer software programmes for security. In the Netsis programme the LOG records include details such as the Netsis user name, the menu option in which the operation is processed, file name, time, date, operation type information for every operation which users process. The system is based on four basic operation types. These are grouped under the titles of Record, Modification, Deletion and Operation. While the **Record** operation stores the details of the record operations, such as the Invoice Record, processed in the programme; the **Delete** operation stores the record details with their content at the time when the records are deleted. The **Modification** operation, on the other hand, stores the operation which were previously recorded in the programme, in both their previous state as before they were modified and their modified state. And finally in the **Operation** type, the system stores the log records when operations such as Transaction Control, Code Modification are processed or when errors occur and indicate that a certain operation was realised. If desired, it is possible to use the **Logged Table Choosing** section to define the tables and the operations processed in these defined tables (Record, Delete, Modify and Operation) will be logged in the programme.

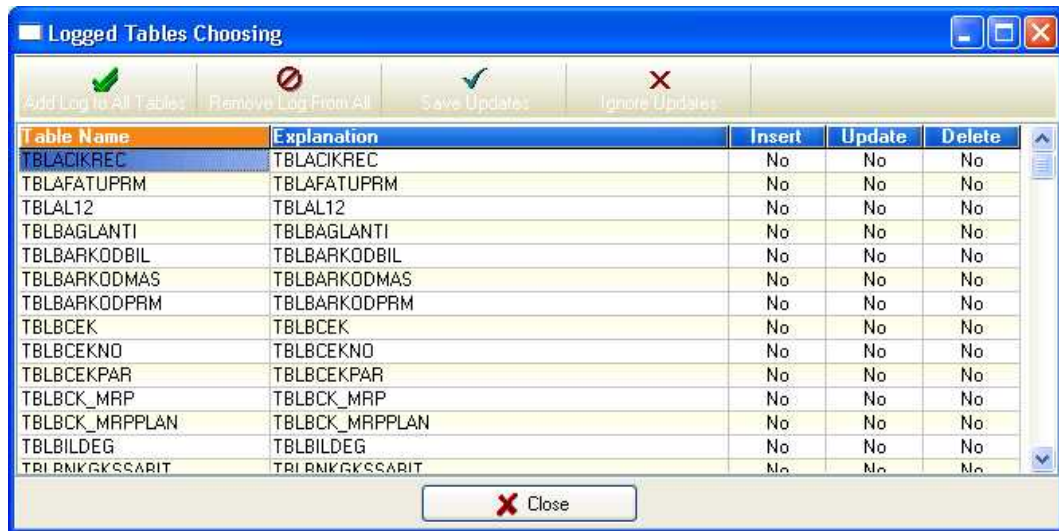
When entering the definitions for the Log application, definitions should be identified for those tables which truly require logging. It is important to bear in mind first that depending on the intensity of the logged records, the database size will rapidly increase accordingly and second that there should be sufficient disk space in the system.

The LOG Module enables the programme to record every kind of operation which the users process to be recorded in the location named LOG aside from the location in the relevant database record which the operation targets.

The records in the LOG Module aims at identifying the errors made by users whether intentional or unintentional. The logged information is recorded with such details that the records can be restored by special applications if truly necessary.

2. Record

2.1 Logged Tables Choosing

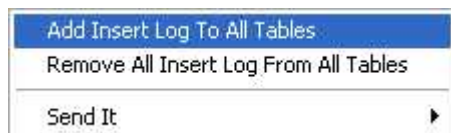


This window queries whether the **record**, **modification** and **deletion** logs should be kept for every table. Since the records are kept on branches bases, it is possible to keep a record log for the **tblcasabit** table in one branch, delete record in another branch and no logs in yet another branch.

The Add Log to All Tables option will update the Record, Modification and Deletion columns as Yes for all tables, whereas the Remove Log from All option will update the Record, Modification and Deletion columns as No for all tables. When the Save Updates option is selected the records will be saved in their most recent versions and the latest versions of the records will be deleted when the Ignore Updates option is selected.

2.1.1 Function Keys

2.1.1.1 Add Insert Log to All Tables /Remove All Insert Log from All Tables



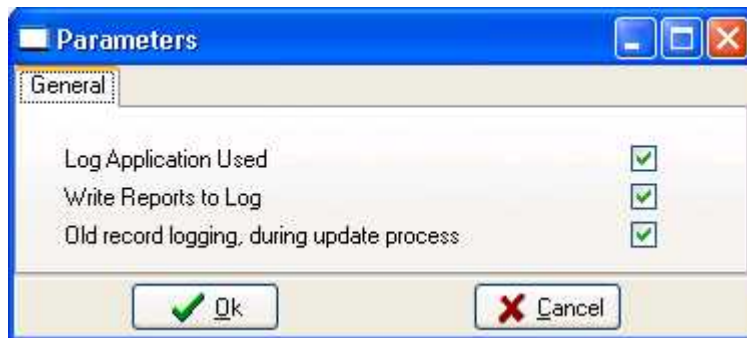
The options that will be displayed when you right click enable you to define the Yes or No options collectively on column basis. If want to stop keeping logs you can run the "Remove All Insert Log from All Tables" operation and

then deselect the "Log Application Used" parameter in the Log Parameters section.

2.1.1.2 Send It

You can use the Send It option to transfer the information displayed in the Grid window to Excel, Word, Calculator and Writer programmes. [For detailed information, please see Introduction/Grid/Send It.](#)

2.2 Log Parameters



Log Application Used

When you select this parameter, the processed operations will be copied to the log file otherwise they will not. However, even if you select this parameter the relevant tables will not be logged unless you select the **Yes** option in the Logged table Choosing section for the relevant tables.

The Log application can be defined on basis of the Branches of the Entity and enables log records in the desired branch or branches.

For example, even if Log Application Used parameter is activated in the main branch of an Entity, if the Log Application will be used also in Branch 2, this parameter should be separately activated in Branch 2.

If the Log Application Used checkbox is selected and all of the tables in the Logged tables Choosing section are marked as No, then only the logs of the operations and errors will be recorded.

Write Reports to Log

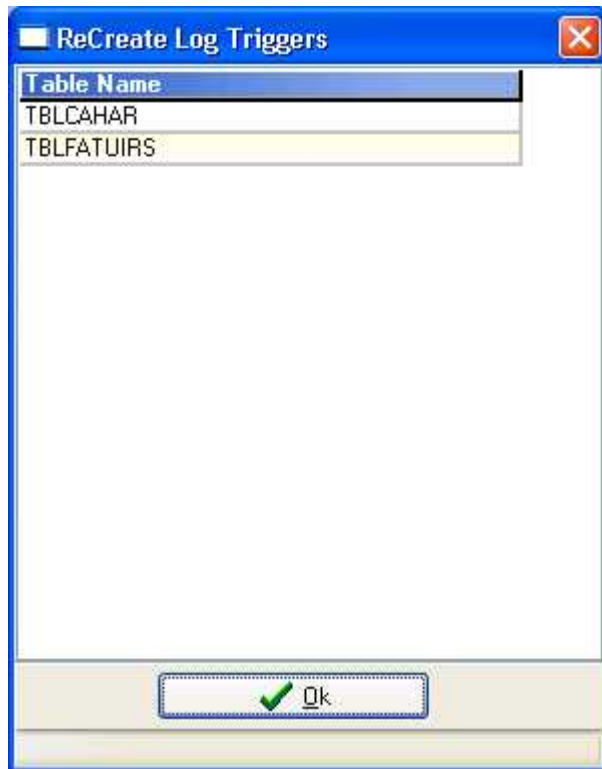
When this parameter is selected the reports you prepare will also be recorded in the log. The table name will be recorded as the report name and the entry will be recorded as an operation log. Since the relevant report name will be written in the description field, you will be able to easily identify the information such as which report was prepared by which user and when.

Old record Logging During Update Process

When you select this parameter, when a modification operation is processed, the programme will keep the log of both the former version and the modified version of the record. If this parameter is not selected, then only the modified version will be recorded.

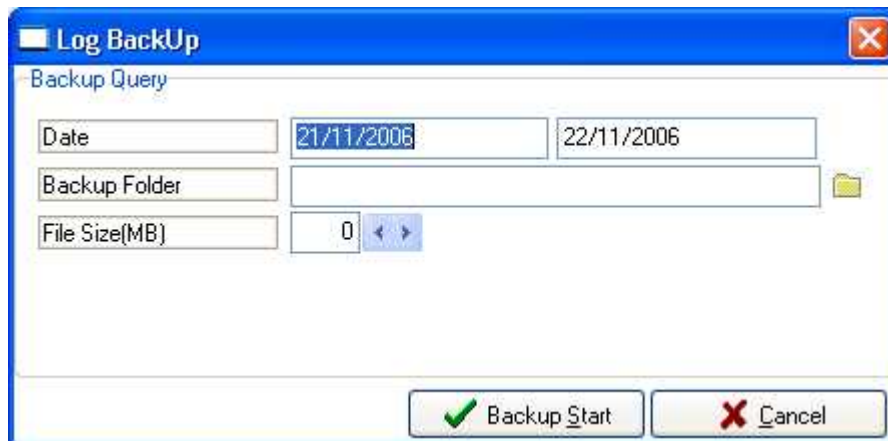
3. Operations

3.1 ReCreate Log Triggers



In this section you can have the programme recreate the Log Triggers in their latest versions. You should run this section when technical problems arise and by consulting a supervisor.

3.2 Log Backup



The Log information is kept in the database named NETSIS and it is possible to get log reports whenever necessary by connecting to this database. If you are recording logs for a long time, this is to say that the file size stored in the NETSIS database has reached a large size, you can run this operation to backup the log information in a separate file and delete the backed up information from the NETSIS database.

4. Reports

4.1 HTML Log Report

Date Interval

In this section you should enter the start and end dates to be included in the report.

User Name

In this field you should enter the name of the user whose information you want to get in the report. If you leave this field blank, the programme will list all of the logs for all Netsis users.

Login Name

In this field you can specify the login name that signed in any computer in operation.

Module and Program

Every module and every menu option in the Fusion system is assigned a number. The Module and Programme numbers can be monitored in the User Operations Module. When recording the logs, the programme records the number of the module and programme according to the option used in the module. If there are any records related to a module or menu option in a module that you wish to list, then you can indicate the relevant numbers in this field.

Operation Type

Five basic operations are defined in the Log system. These are the **Record**, **Modification**, **Deletion**, **Operation** and **All** operations. In this field you can specify the operation type that you want to include in the report.

Menu Item

This field queries the programme menu title that you want to include in the report. If you leave this query blank, you will get the log information of all menus. Here you can define filters such as **Current Account Records**.

File Name

In this field you should indicate the name of the Table for which you want to get the report. Here you can define filters such as **TBLCASABIT**.

Explanation

When you want to prepare the report by defining filter for the information in the variable section where the log records are kept, you can define this filter in this section. For example, let us assume that we have a document for which we want to review the logs and we know the relevant document number. We can enter the number in this field and list all of the logs related to that document. This document number will generate the list of all records that are logged for the information recorded in any of the fields in the record, such as document header information, current account transactions, inventory transaction, ledger integration, etc.

Since the format of the column logged in this document is XML, it will be also possible to search only the information recorded in a specific field. For example, `<STOK_KODU>0014</STOK_KODU>` can be written to display the logs of a record which has the inventory code 0014 in the inventory master table.

Program Name

In this section you can define the programme file of the related module as the filter. For instance, **Fatura.DII**, can be defined as filter.

Print Detail Information

If you do not want to include any details, the fixed information in the log records (user name, module number, program number, menu option, etc.) will be listed. If, however, you want to include the details, the programme will list two rows of information for every log record. The variable information recorded in the record content will be listed in the 2nd row. If the type of the logged record is Operation, then the information will relate to the operation. In general, this information includes phrases that register the phases of the operation, such as **operation started**, **operation ended**.

In the operation field of the log report,



means New Record,



means Modified Record, and



means Deleted Record.

If there are no marks in the operation field, this indicates that the related record is a report, error or operation record.

The Log Report is generated in the HTML format.